

Building connections that last™

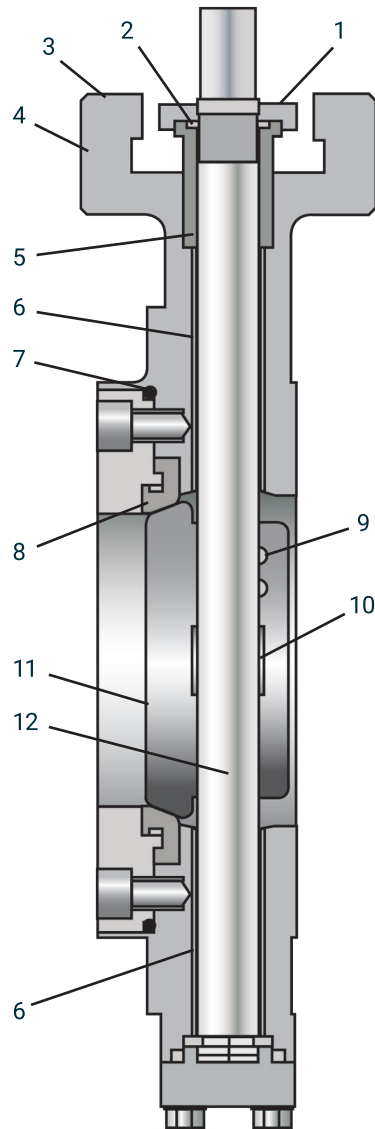


ABZ 400 Series

Elite Seal Double Offset High Performance Butterfly Valves Datasheet



Elite Seal Double Offset High Performance Butterfly Valves
ABZ 400 Series



Feature & Benefits

1. Underneath Drawn Gland Packing – Allows for ease of user adjustment to the gland nuts and direct mounting of actuation
2. Stem Retention System – Provides positive stem retention above the packing
3. Mounting Flange – Designed to direct mount actuation for ease of installation and cost saving
4. Body is available in Wafer and Lug
5. Packing – PTFE is a cup and cone system
6. Bearings – Made of 316 stainless steel sleeves impregnated with RTFE to ensure long service life
7. Seat Retainer – The heavy-duty retainer plate and cap screws provide a full rated bi-directional dead end service valve. The seat retainer seal prevents leakage to the atmosphere past the retainer plate and body
8. Seat – Utilizes a solid soft seat with a unique channel design. This advanced design provides a bi-directional interference and pressure-assisted seal. This achieves maximum seal at low or high pressures while preventing the seat from bending or deflecting downstream
9. Disc Taper Pins – Pins are offset from the center of the stem, which places them in compression rather than in shear. This gives them a yield point greater than the stem itself. Pins are welded in place after final assembly and testing
10. Integrally Cast Disc Position Stop – Machined position stop in the body locates the disc in the seat to achieve maximum seat and seal life
11. Disk – Cast from 316 Stainless Steel (CF8M – A351), and engineered to allow for quick release from the seat. The disc has a heavy duty low cavitation cross section connection to the stem. This results in lower torques and smoother operations
12. Stem – Manufactured of high strength 17-4 PH Stainless Steel to provide maximum strength and stability for high torque applications

Elite Seal Double Offset High Performance Butterfly Valves

ABZ 400 Series



412 is a 150 Class Lug
432 is a 300 Class Lug

411 is a 150 Class Wafer
431 is a 300 Class Wafer



Main Materials

Body

ANSI Class 150, ANSI Class 300
Carbon Steel (A216-WCB)
316 SS (A351-CF8M)

Disc

316 SS (A351-CF8M)

Stem

17-4 PH SS (A564-630)

Seat

PTFE
RTFE

Shaft Bearing

316 SS + RTFE Impregnated

Packing Seal

PTFE

Additional materials available upon request.

Standard Production Range

	ANSI Class 150	ANSI Class 300
PSI Rating	285	740
Size - Inch	2"-24"	2"-24"
Design Specifications	API 609	
Testing	API 598	
Face to Face Specifications	ANSI B16.10 / API 609	
End Flange Specifications	ASME B16.5: CLASS 150, 300 JIS B2210: 10K, 16K, 20K DIN ISO: PN10, PN16, PN25, PN40	
Connection	Wafer / Lugged	
Actuator - Manual	Lever Handle Worm Gear Operator	
Actuator - Automated	Electric Motor Pneumatic Double Acting Pneumatic Spring Return	

Seat Material and Rating

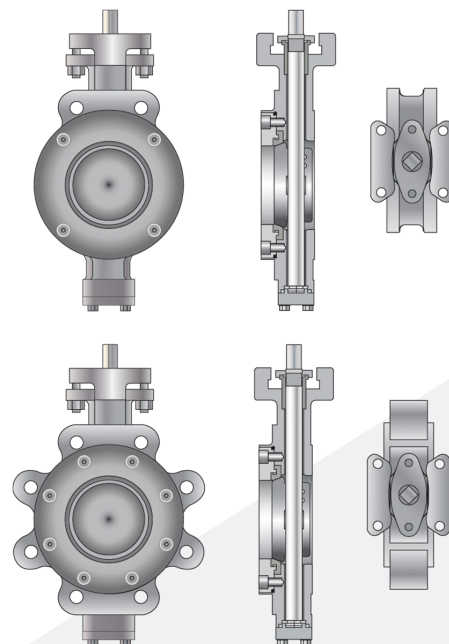
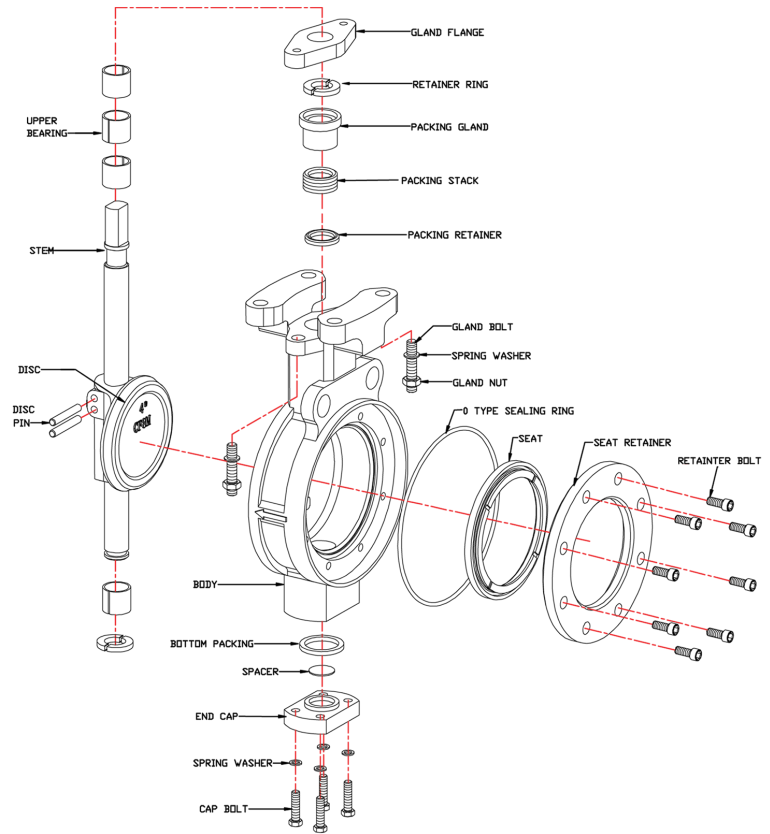
Seat Material	Rating
PTFE	Class VI, Bubble Tight
RTFE	Class VI, Bubble Tight

Elite Seal Double Offset High Performance Butterfly Valves

ABZ 400 Series

Parts Schedule

Item No.	Name	Materials		No Req'd
		Trim 100	Trim 102	
1	Body	A216-WCB	A351-CF8M	1
2	Seat	RTFE		1
3	Disc	A351-CF8M		1
4	Stem	17-4 PH		1
5	Seat Retainer	A216-WCB	A351-CF8M	1
6	Gland Flange	A216-WCB	A351-CF8M	1
7	End Cap	A216-WCB	A351-CF8M	1
8	Packing Gland	316		1
9	Packing Stack	PTFE		1 Set
10	Packing Retainer	316		1
11	O-Ring	PTFE		1
12	Upper Bearing	316 + PTFE		1 Set
13	Retainer Ring	316		1
14	Cap Packing	PTFE		2
15	Adjustment Washer	PTFE		1
16	Spring Washer	316		4
17	Cap Bolt	316		4
18	Taper Pin	316		2
19	Gland Bolt	316		2
20	Spring Washer	316		2
21	Gland Nut	316		2
22	Retainer Bolt	316		1 Set



About ASC Engineered Solutions

ASC Engineered Solutions is defined by quality—in its products, services and support. With more than 1,400 employees, the company's portfolio of precision-engineered piping support, valves and connections provides products to more than 4,000 customers across industries, such as mechanical, industrial, fire protection, oil and gas, and commercial and residential construction. Its portfolio of leading brands includes ABZ Valve®, AFCON®, Anvil®, Anvil EPS, Anvil Services, Basic-PSA, Beck®, Catawissa, Cooplet®, FlexHead®, FPPI®, Gruklok®, J.B. Smith, Merit®, North Alabama Pipe, Quadrant®, SCI®, Sharpe®, SlideLOK®, SPF® and SprinkFLEX®. With headquarters in Commerce, CA, and Exeter, NH, ASC also has ISO 9001:2015 certified production facilities in PA, TN, IL, TX, AL, LA, KS, and RI.



asc-es.com

Building connections that last™

FC-DS-ABZ 400 Elite-v02 20220118

