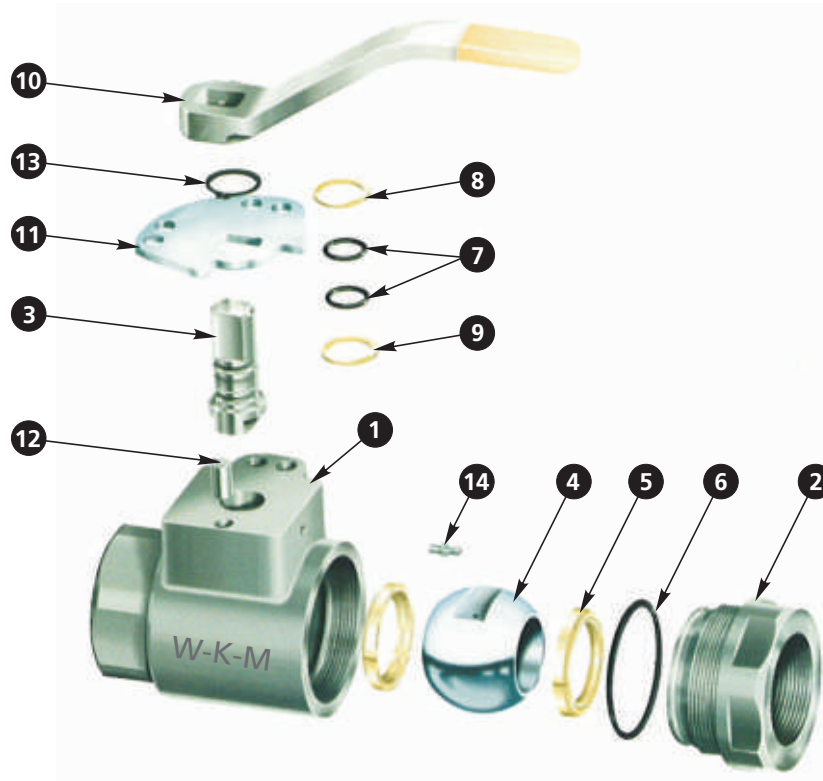


C50 BALL VALVE



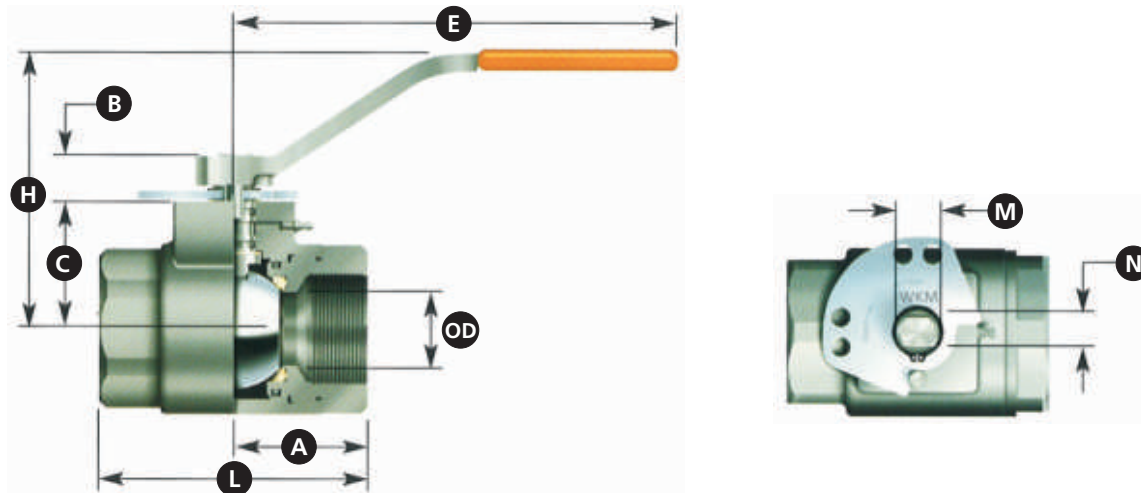
FEATURES AND BENEFITS

- 2-PC THREADED END BALL VALVE, 5000 WOG
- FIRE TESTED & CERTIFIED API 607 4TH EDITION
- WORKING PRESSURE: 5000 PSI
- CONFORMS TO NACE MR0175 (2002) SPECIFICATION
- POSITIVELY RETAINED STEM DESIGN
- ENCAPSULATED SEAT DESIGN
- STANDARD STEM LUBRICATION WITH FITTING
- TAMPER PROOF DOUBLE LOCKING PLATE

MATERIALS LIST

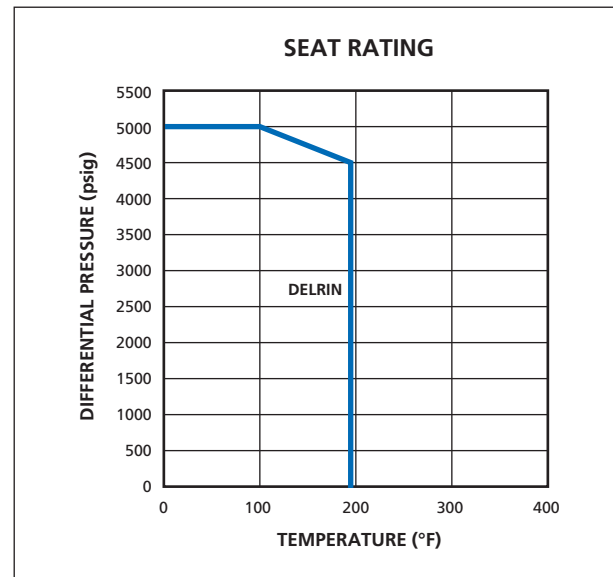
ITEM	QTY.	PART	MATERIAL
1	1	Body	A487
2	1	Adapter	A487
3	1	Stem	CS Zinc/316 SS
4	1	Ball	A105 w/NiCr/316 SS
5	2	Seat	Delrin
6	1	Body Seal	Buna
7	2	Stem Seal	Buna
8	1	Stem Bearing	Delrin
9	1	Thrust Bearing	Delrin
10	1	Handle Assembly	Carbon Steel
11	1	Stop Plate	Plated Steel
12	1	Stop Pin	Steel
13	1	Retainer	Spring Steel
14	1	Lube Fitting	Steel

C50 BALL VALVE DIMENSIONAL DATA



C50 APPLICATION

SIZE in. (mm)	1 FP (25.4) FP 1 x 1 (25.4 x 25.4)	1 1/2 FP (38.1) FP 1 1/2 x 1 1/2 (38.1 x 38.1)	2 RP (50.8) RP 2 x 1 1/2 (50.8 x 38.1)
OD	1 (25.4)	1 1/2 (38.1)	
L	4 (101.6)	5 1/2 (139.7)	
A	2 (50.8)	2 3/4 (69.9)	
C	1 5/8 (41.4)	2 5/8 (66.8)	
H	3 1/4 (82.6)	5 1/2 (139.7)	
E	6 1/4 (158.8)	8 1/2 (215.9)	
B	7/8 (22.4)	1 (25.4)	
N	.432/.428 (11/10.9)	.620/.616 (15.7/15.6)	
M	.621/.617 (15.8/15.7)	.871/.867 (22.1/22.3)	



VALVES & MEASUREMENT
 3250 Briarpark Drive, Suite 300
 Houston, Texas 77042
 USA Toll Free 800 323 9160

For the most current contact and location information go to: www.c-a-m.com/valvesandmeasurement