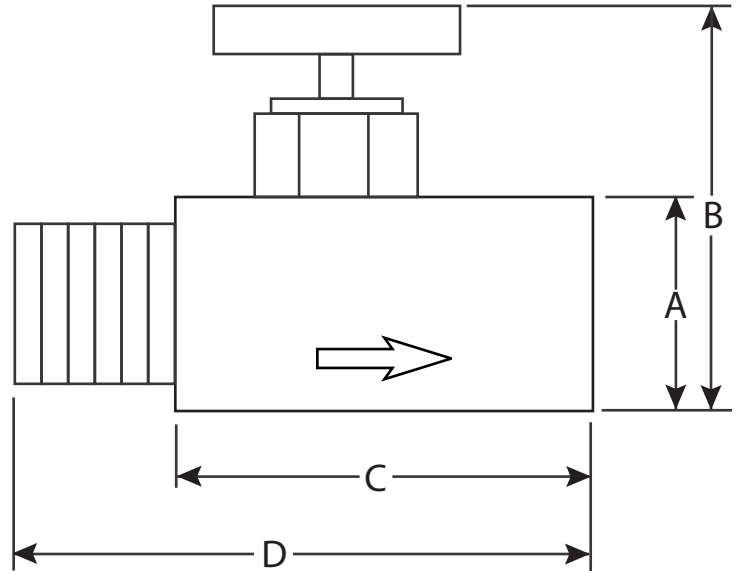




## CARBON STEEL MINI NEEDLE VALVE SERIES: MVDC



### SPECIFICATIONS

**RATED TO 6,000 PSI**  
**CARBON STEEL CONSTRUCTION**  
**VITON PACKING AND SEALS**  
**WORKING TEMPERATURE -20 DEG F TO 100 DEG F**  
**THREADS CONFORM TO ASME B1.20.1**  
**AVAILABLE IN MxM, MxF AND FxF**  
**NACE MR0175**

PART	MATERIAL
ROUND KNOB	CARBON STEEL
STEM	304 STAINLESS STEEL
BONNET	CARBON STEEL
VALVE BODY	CARBON STEEL

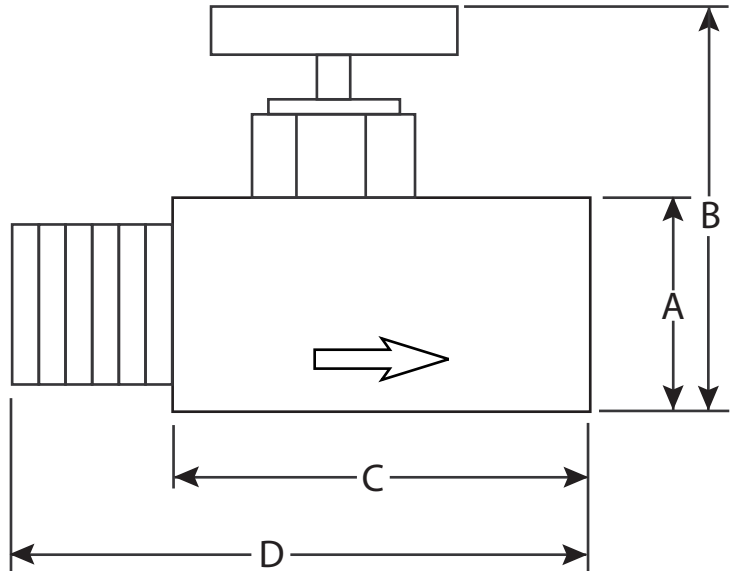
### DIMENSIONS

NPS	PART #	STYLE	WEIGHT	A	B	C	D
1/4"	MVDC4	FxF	0.66	.75"	1.71"	1.31"	1.81"
1/4"	MVDC5	MXM	0.66	.75"	1.71"	1.31"	1.81"
1/4"	MVDC6	MXF	0.66	.75"	1.71"	1.31"	1.81"

*\* Due to the continuous development of our products, design or construction may change without prior notice*



## STAINLESS STEEL MINI NEEDLE VALVE SERIES: MVDS



### SPECIFICATIONS

**RATED TO 6,000 PSI**  
**STAINLESS STEEL CONSTRUCTION**  
**VITON PACKING AND SEALS**  
**WORKING TEMPERATURE -20 DEG F TO 100 DEG F**  
**THREADS CONFORM TO ASME B1.20.1**  
**AVAILABLE IN MxM, MxF AND FxF**  
**NACE MR0175**

PART	MATERIAL
ROUND KNOB	303 STAINLESS STEEL
STEM	304 STAINLESS STEEL
BONNET	316 STAINLESS STEEL
VALVE BODY	316 STAINLESS STEEL

### DIMENSIONS

NPS	PART #	STYLE	WEIGHT	A	B	C	D
1/4"	MVDS4	FxF	0.66	.75"	1.71"	1.31"	1.81"
1/4"	MVDS5	MXM	0.66	.75"	1.71"	1.31"	1.81"
1/4"	MVDS6	MXF	0.66	.75"	1.71"	1.31"	1.81"

\* Due to the continuous development of our products, design or construction may change without prior notice